

Norwegian Integration policy: the case of the Norwegian Model on Public Service Interpreting

Leonardo Doria de Souza
senior adviser

**The Norwegian Directorate of Integration and
Diversity (IMDi)**



Immigrant population in Norway

5 514 042 inhabitants

20 %

of the population had immigrant background in **2023**, compared to **7 percent** in **2003**

24 %

of the immigrants have lived in Norway for less than 5 years

32 %

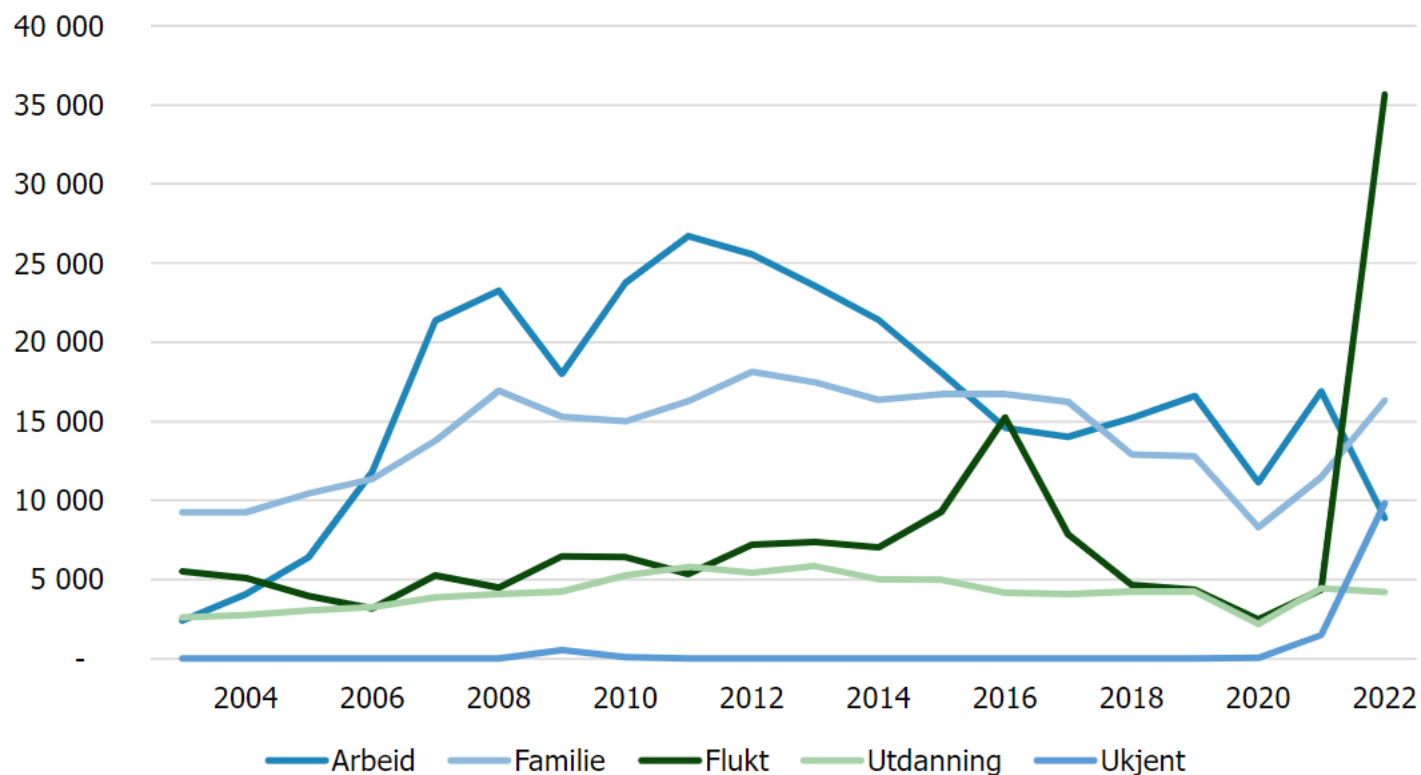
of the immigrants are refugees or family members of refugees

57 681

registered asylum seekers from Ukraine since February 2022

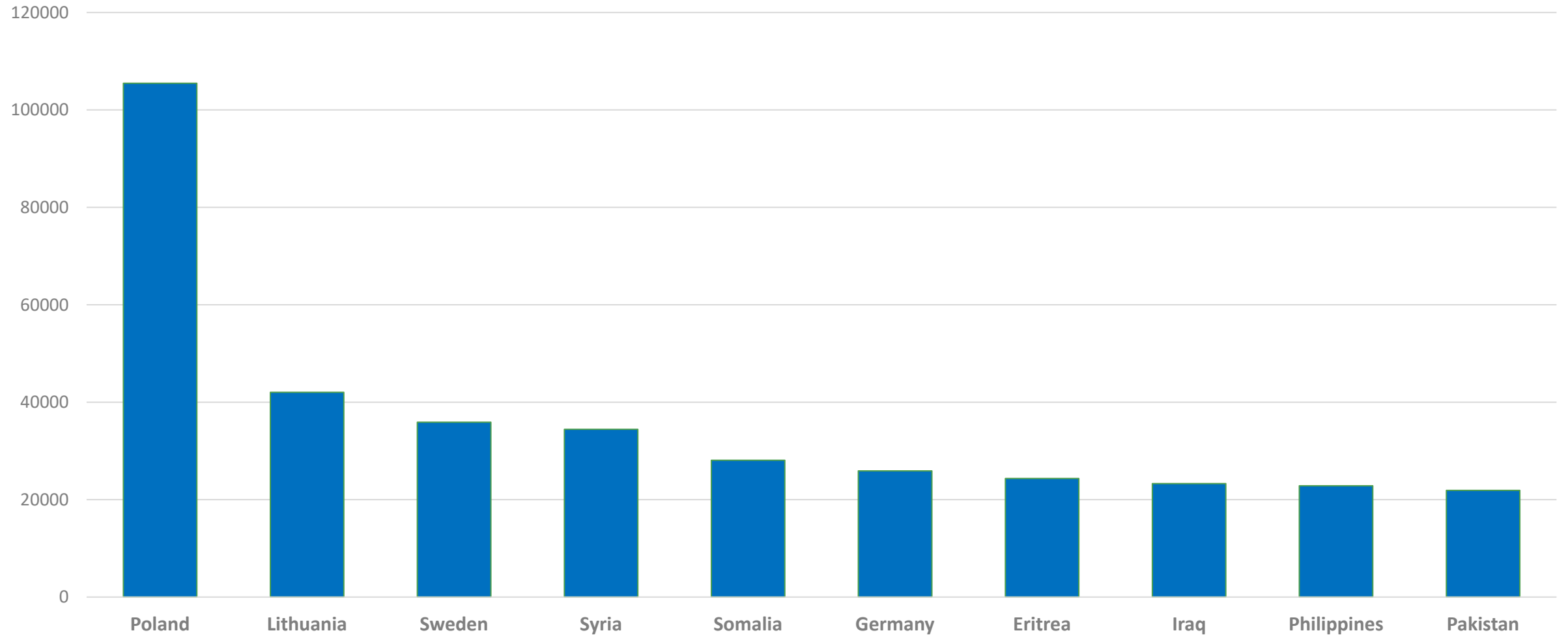


Immigrants in Norway - reason for immigration



Immigrants in Norway - country background

(ukrainians will be the 2nd largest group by the end of 2023)



Greece 26.9.2023

Greece to tap into undocumented migrants to curb labour squeeze

Reuters

September 27, 2023 2:55 PM GMT+2 · Updated 6 days ago



A migrant stands in the Mavrovouni camp on the island of Lesbos, Greece, November 25, 2021. REUTERS/Louiza Vradi/File Photo [Acquire Licensing Rights](#)

ATHENS, Sept 27 (Reuters) - Greece's conservative government is working on a plan to integrate hundreds of thousands of undocumented migrants to fill worker shortages in agriculture, construction and tourism, ministry officials said on Wednesday.

Like other European countries, Greece faced an exodus of workers from the labour force, both natives and legal immigrants, during the 2020 COVID-19 pandemic, many of whom never returned.

Greece to integrate irregular migrants amid labour shortage

Government seeks to address lack of workers in agriculture, tourism and construction



Migrants on a boat at Paleochora, Crete, in November 2022. Since the beginning of September, another 7,000 people have arrived on Greek islands © Costas Metaxakis/AFP/Getty Images



Eleni Varvitsioti in Athens and Amy Kazmin in Rome 4 HOURS AGO



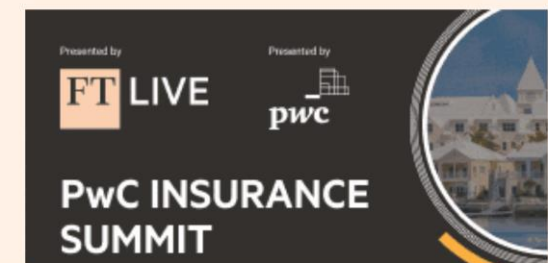
Receive free Greek economy updates

We'll send you a *myFT Daily Digest* email rounding up the latest Greek economy news every morning.

Greece plans to regularise the status of up to 300,000 migrants to cope with increasing labour market shortages, highlighting the dilemma rightwing governments face when trying to curb illegal arrivals.

Migration minister Dimitris Kairidis said on Tuesday that the plan was aimed at alleviating acute shortages in agriculture, tourism and construction and includes migrants whose residence permits have expired or are undocumented.

Advertisement



Norwegian Directorate of Integration and Diversity (IMDi)

Administrative body and the national competence centre responsible for the integration field. The Directorate implements the Government's integration policies, strengthening the competence of municipalities, sector authorities, and other partners in the field of integration and diversity.

- ◆ enable newly arrived immigrants to participate in the labour market and in the society in general
- ◆ to build strong and good communities at the local level
- ◆ to promote gender equality
- ◆ to combat discrimination
- ◆ to combat negative social control

Equal opportunities,
rights and duties in a
diverse society.



Information for refugees from Ukraine

Settlement

IMDi works to achieve the speedy, satisfactory and stable settlement of refugees. This is done through a collaboration between the municipalities and the directorate.

Training and skills

IMDi has a key role as a driving force and coordinator when it comes to qualifying adult immigrants and diversity in the labour market.

Interpreting services

A part of IMDi's responsibilities in the field of integration is interpreting services in the public sector.

Negative social control

Negative social control and honor-related violence are barriers that can hinder individuals' right to live free lives. Efforts to prevent negative social control, forced marriage and female genital mutilation are a priority area for IMDi.

Diversity in the labour market

A labour market that has a diversity of employees with different backgrounds, language skills and cultural competence can contribute to innovation, growth and value creation.

Voluntary work

Local organisations that offer various integration measures are an important supplement to the municipalities' work with refugees and immigrants. NGOs can provide language training, networking and homework help, among other things.

The legal framework

The Integration Act (2021)

- More refugees will gain formal education through the Introduction Program.
- The counties are made responsible for making plans for qualifications of immigrants and for offering career guidance.
- Temporary amendments to meet the influx of displaced from Ukraine.

The Norwegian Nationality Act (2005)

- rules on how persons can become Norwegian nationals and how they may lose their Norwegian nationality.

The Interpretation Act (2022)

- Regulates the responsibility of public bodies to use qualified interpreters.



The Norwegian settlement model and policy

- ◆ aims to settle refugees in all parts of the country
- ◆ a voluntary municipal task
- ◆ the municipality is responsible for providing integration measures, education and public services.
- ◆ the municipalities receive a per capita grant (approximately € 90 000 for a period of 5 years)
- ◆ Policy goal: find employment or pursue education and financial self-sufficiency

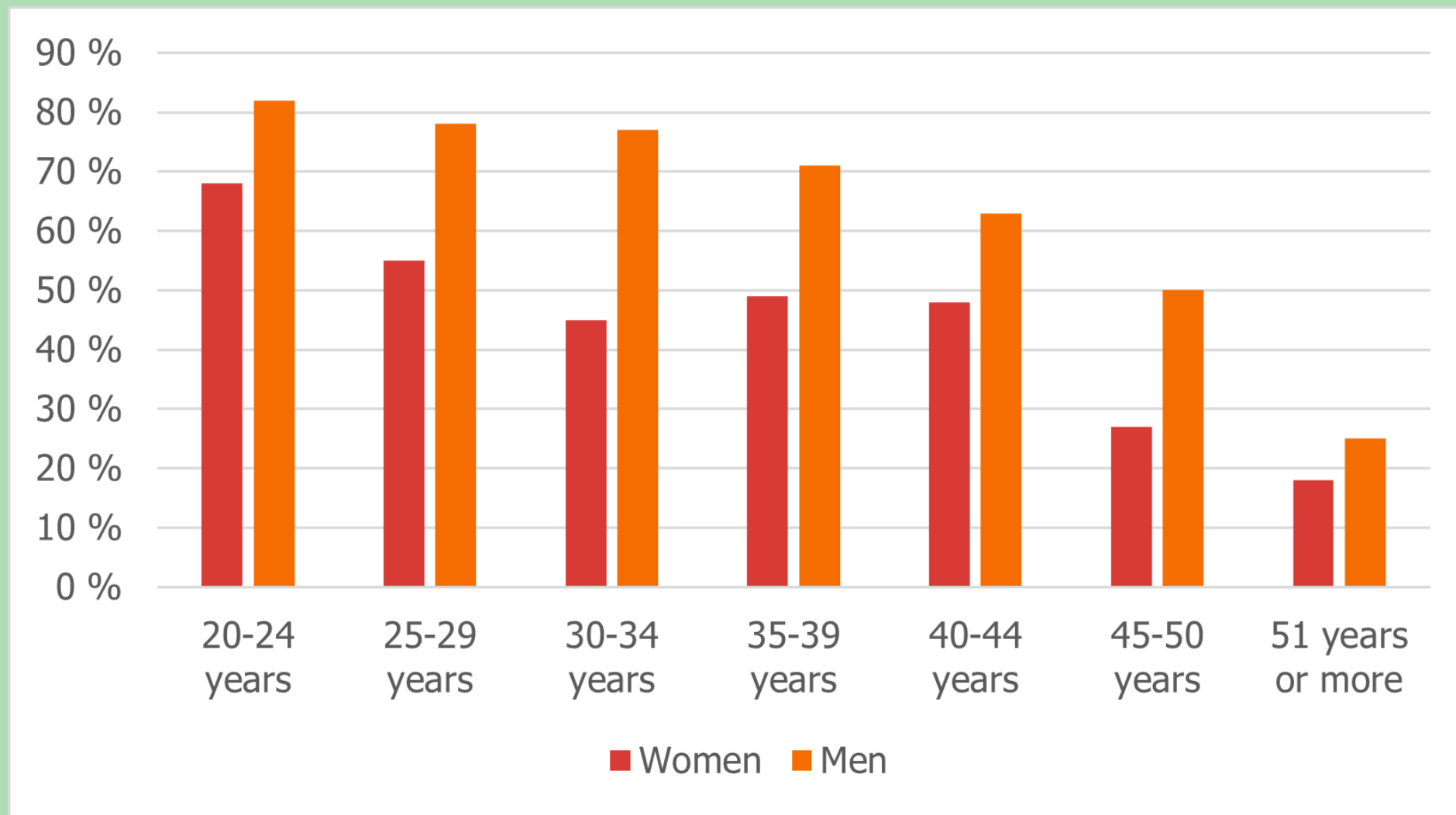


The introduction programme

- aims to provide basic skills in Norwegian language and social studies
- measures to acquire skills to enter the labor market or education
- full-time basis
- an individual adapted plan
- career counseling
- possible to work during the program
- duration of program will vary depending on the participants' background (6 months - 4 years)
- economic benefit – for 2022 was approximately € 21.000



Proportion in employment or education one year after completing the introduction programme, broken down by gender and age



Strengthening the role of civil society in integration

- Nationwide NGOs are essential partners.
- The organisations help to strengthen and develop the local integration work and promote everyday integration through creating meeting places, and arenas for activity and learning.
- To better succeed in the field of integration:
 - IMDi has letters of intent with 10 NGOs at the national level.
 - IMDi has cooperation with 40 municipalities across Norway.
 - IMDi manage three sub-schemes for projects, individual measures or activities that contribute to increase participation among immigrants and their children.



Negative social control and harmful practices

- Negative social control and honor-related violence are barriers that can hinder integration and individuals' right to live free lives.
- significant challenges to gender equality, affecting especially women and girls with an immigrant background.
- is a social and public health problem limiting their ability to participate in society.
- IMDi employs specialized services targeting victims:
 - Minority advisors
 - National Team for building competency
 - Consular assistance: Integration counsellors at foreign missions in Nairobi, Ankara, Amman and Islamabad



National Authority on Public Service Interpreting



3 GOOD HEALTH
AND WELL-BEING



4 QUALITY
EDUCATION



16 PEACE, JUSTICE
AND STRONG
INSTITUTIONS

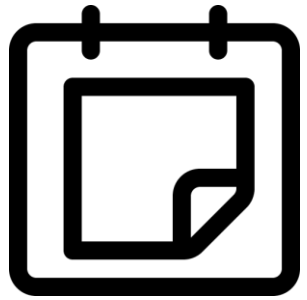


10 REDUCED
INEQUALITIES



- Increase the use of qualified interpreters in public sector
- Fund and realize research projects on the field
- Fund training and qualification measures for interpreters at Oslo Metropolitan University, Western Norway University of Applied Sciences and the Sami University of Applied Sciences
- Responsible for the National Register of Interpreters (tolkeregisteret.no)
- Support and advise on the implementation of the Interpreting Act (1.1.2022)
- International Cooperation

Main figures (2022)



919.000
assignments



€ 87.000.000 spent
on int. services

National Register of Interpreters

2245 listings
79 languages

On-site



31 %

Video



2 %

Telephone



67 %

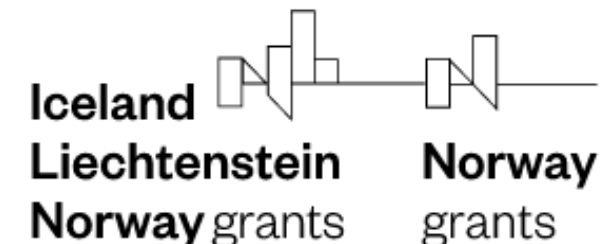
Research and development

- **R&D budget:**
 - **2020: € 60.000**
 - 2021: € 300.000
 - **2022: € 400.000**
- **Partners:**
 - Educational institutions
 - Research institutes
 - Sectorial authorities

Programme G - Capacity Building of National Asylum and Migration Management Systems

Pre-defined project 3 «National Registry of Interpreters»

- Establishing a National Register of Interpreters
- Design a system for qualification of interpreters
- Legal Framework for the establishment and the operation of the National Registry of Interpreters and set-up of a basic qualification system



ευχαριστώ πολύ

lds@imdi.no